

# EFD/EFDB and EDS Series Factory Sealed Control Stations



## EFD/EFDB Push Button Accessories

### NEC/CEC:

Class I, Division 1 and 2, Groups B\*, C, D  
 Class II, Division 1 and 2, Groups E, F, G  
 Class III

Appleton®

CONTROLS: NEC/CEC EXPLOSIONPROOF CONTROL STATIONS AND SWITCHES

Description		Catalog Number	
<b>Pilot Light, Factory Sealed</b>			
 Pilot Light	 Chamber Only	<b>Incandescent</b> Furnished with 6S6 120 Vac incandescent lamp, jewel and guard. Has 457 mm (18") long, type SFF-2 pigtail leads; +150 °C (+302 °F). Body has 3/4" straight thread (NPSM).	
		With Red Jewel With Green Jewel With Amber Jewel With Blue Jewel With Clear Jewel With Opal Jewel	SPLSREB SPLSGRB SPLSAMB SPLSBLB SPLSCLB SPLSOPB
		<b>LED</b> Furnished with candelabra base 120 Vac LED, jewel and guard. Has 457 mm (18") long, type SFF-2 pigtail leads; +150 °C (+302 °F). Body has 3/4" straight thread (NPSM).	
		With Red LED, Clear Jewel With Green LED, Clear Jewel With Amber LED, Clear Jewel	SPLNSREB SPLNSGRB SPLNSAMB
		<b>Chamber Only</b> (Same as above, less jewel, guard and lamp)	SPLSSCB

### Pilot Light Jewel/Guard Assembly

The below catalog numbers indicate an assembly of the Pilot Light Jewels and Guards. Jewels and Guards are not available as separate items.



Amber Jewel/Guard	JGBNA
Blue Jewel/Guard	JGBNB
Clear Jewel/Guard	JGBNC
Green Jewel/Guard	JGBNG
Opal Jewel/Guard	JGBNO
Red Jewel/Guard	JGBNR

### Replacement Bulbs



EPL-B6W



EPLLEDR

#### Clear Bulbs

Furnished with candelabra base. 6 Watt, 120 Vac, Type 6S6

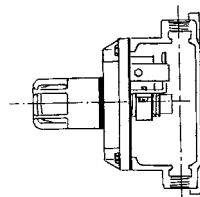
EPL-B6W

#### LED Replacements

Furnished with candelabra base. 120 Vac, 10 mA.

Red LED	EPLLEDR
Green LED	EPLLEDG
Amber LED	EPLLEDA

### Transformer



Add Suffix as listed below. Transformer clamps directly to pilot light barrel. Only one pilot light transformer assembly per one gang body.

Primary Vac	Lamp Vac	Suffix
220	120	TR2
277	120	TR3
440	120	TR4
550	120	TR5

♦ Suitable for Class I, Group B when installed in an enclosure rated for Class I, Group B.